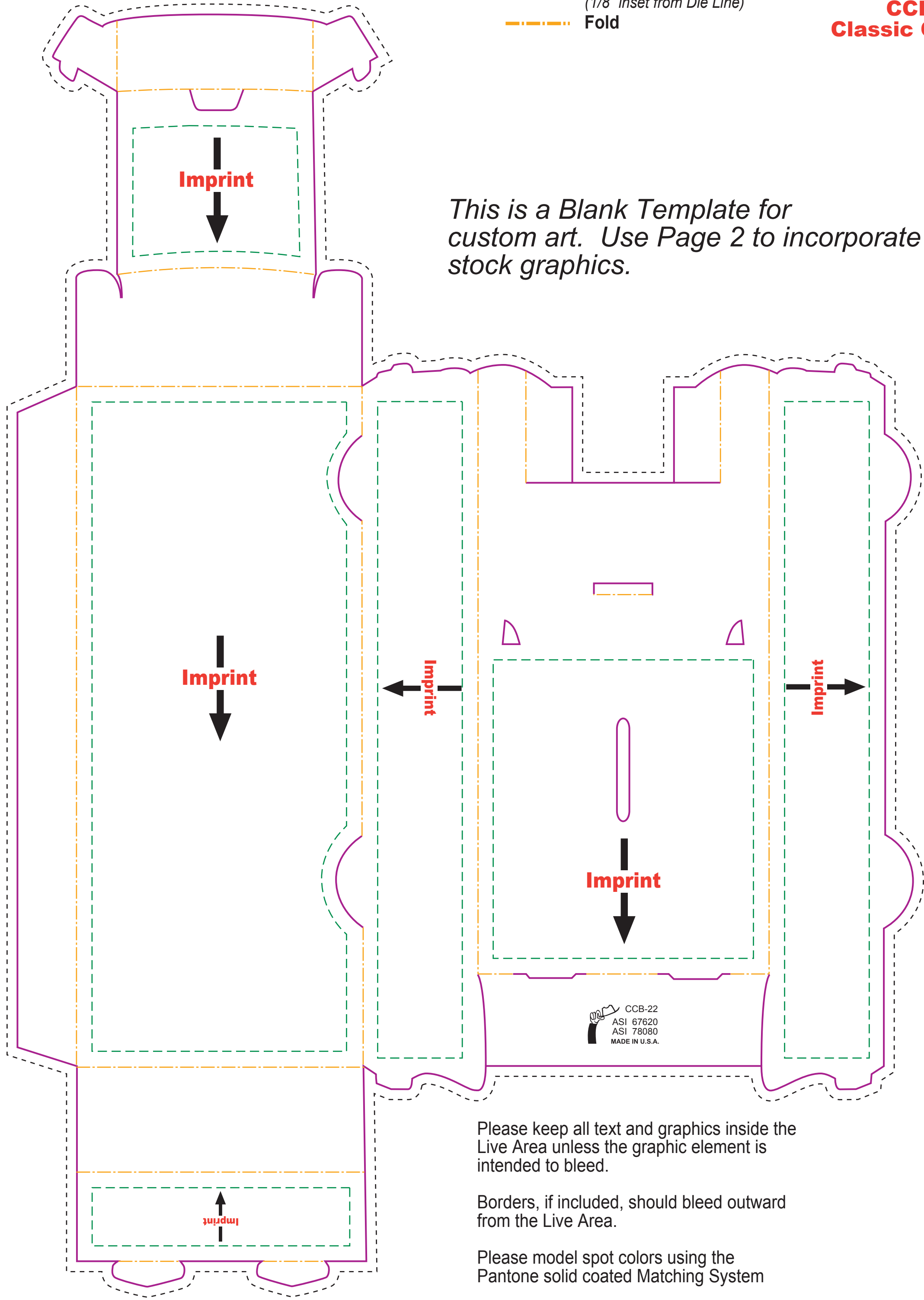


Actual size  
Width: 10.75 in.  
Height: 15.375 in.

**CCB-22**  
**Classic Car Bank**

- **Bleed Line**  
(1/8" offset from Die Line)
- **Die Line**  
(represents actual cut product)
- - - - **Live Area**  
(1/8" inset from Die Line)
- · - · **Fold**



*This is a Blank Template for custom art. Use Page 2 to incorporate stock graphics.*

Please keep all text and graphics inside the Live Area unless the graphic element is intended to bleed.

Borders, if included, should bleed outward from the Live Area.

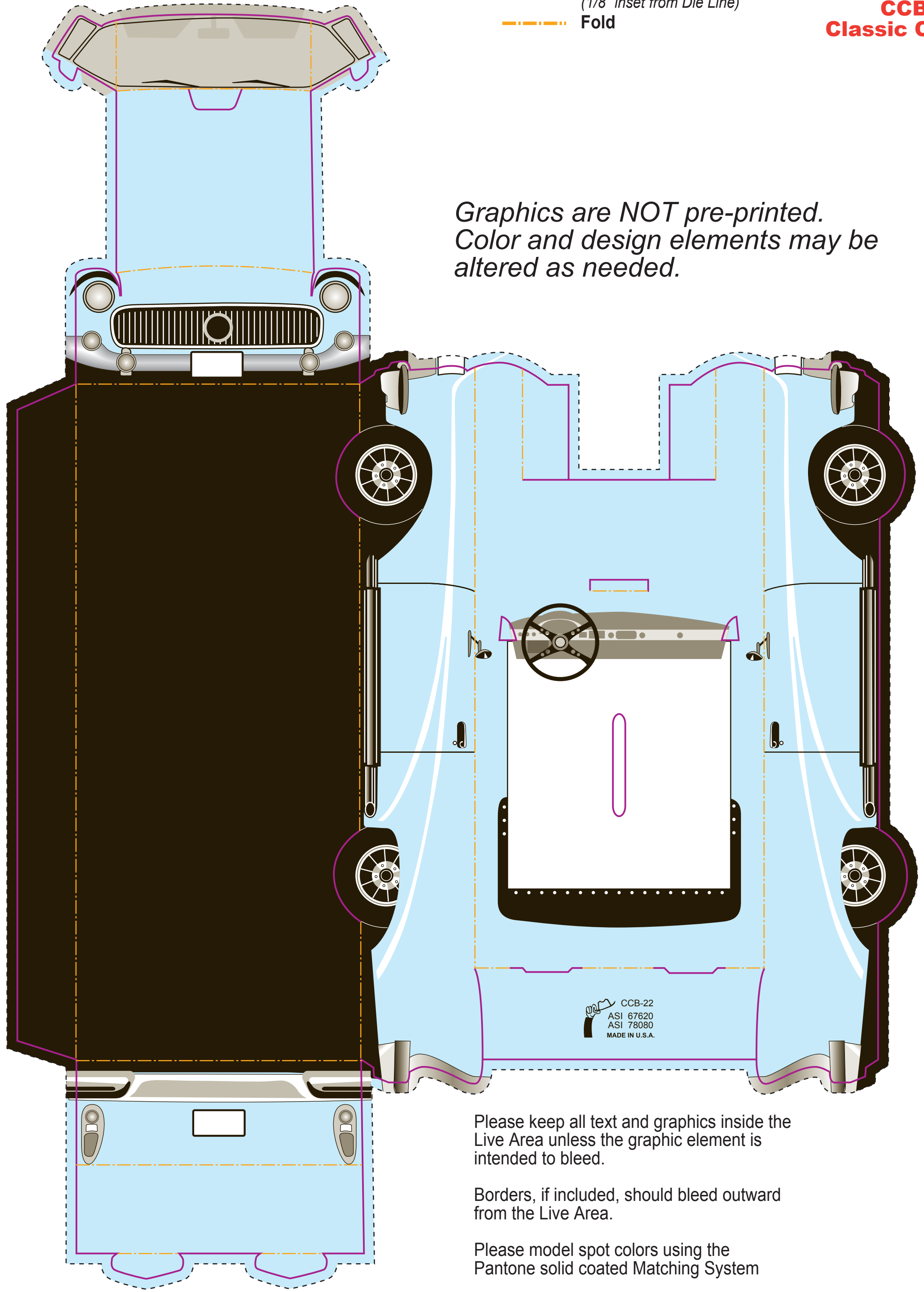
Please model spot colors using the Pantone solid coated Matching System

Please submit all Fonts and Links for output with your Final Composite.

- **Bleed Line**  
(1/8" offset from Die Line)
- **Die Line**  
(represents actual cut product)
- **Live Area**  
(1/8" inset from Die Line)
- **Fold**

*Actual size*  
**Width: 10.75 in.**  
**Height: 15.375 in.**

**CCB-22**  
**Classic Car Bank**



*Graphics are NOT pre-printed.  
 Color and design elements may be altered as needed.*

CCB-22  
 ASI 67620  
 ASI 78080  
 MADE IN U.S.A.

Please keep all text and graphics inside the Live Area unless the graphic element is intended to bleed.

Borders, if included, should bleed outward from the Live Area.

Please model spot colors using the Pantone solid coated Matching System

Please submit all Fonts and Links for output with your Final Composite.